

Macromedia Dreamweaver Class Pages & Templates

Steve Smiley
Northwest ISD – Technology Consultant
steve@smileydays.com

District Contact

Melissa Shawn
melissa@northwest.k12.tx.us

Class Schedule

Overall

Today:

- Design Basics
- Dreamweaver Basics
- Basic Web Page Creation

Next Week:

- Site Management
- Templates

A couple of breaks thrown in as needed.

Class Goals

- Understand design and analysis basics
- Build a basic web page using Dreamweaver
- Implement a site for use by my school
- Build a basic template that reflects school ideas, goals, and demand

Layout Principles

- Lead users to important information using
 - Contrast
 - Repetition
 - Alignment
 - Proximity
- Integrate similar information
- Control how a user perceives your information – where their eyes go and when

Layout Bad Example

- Example #1 – [Backgrounds](#)
- Example #2 – [Distractions](#)
- Example #3 – [Too Many Widgets](#)
- Example #4 – [Highly technical](#)

Great Web Page Design Page
<http://www.ratz.com/features.html>

Home of Bad Examples and Good Design
<http://www.webpagesthatsuck.com>

Layout Good Example

- [Simple Text Layout](#)
- [Good graphics integration](#)
 - Ignore the first page, which was recently destroyed
- [Clean graphics](#)
- [Simple Organization – Full Screen](#)

Pick your favorite web page
Write down

- three things that they do well
- at least two improvements

Sample “Class” Pages

- **Simple:**
<http://www.chc.edu/grat593/>
<http://www3.nu.edu/schools/SOAS/DOWC/courses/IT620syllabus.html>
- **Colorful:**
http://staffwww.fullcoll.edu/jcusaac/Classes/Dreamweaver_CIS98/Syllabus/dreamweaver_X23957_syll.htm
- **Organized and Colorful:**
http://www.uri.edu/cels/pls/logan/syllabus_web_page_and_site_development.htm
- **Complex**
<http://www.edtech.esc11.net/~ssmiley/dglesson/>

Information Designs & Trees

An Information Tree is a hierarchal organization of information

- Phylum
- School District organization charts
- Sentence Structure
- School “blocks”

Simple to navigate and easy-to-use

FOR THE END-USER – NOT THE CREATOR!

School Information

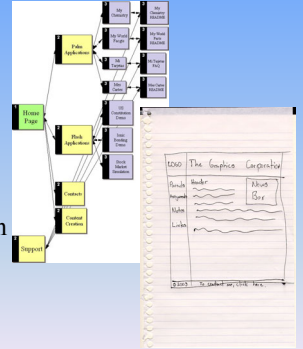
- Policies
- Requirements and Grading
- Location
- Principal
- Syllabus
- Assignments
- Success Stories
- News
- Web Links
- Faculty
- Special Programs
- Calendars
- Basic School Information
- Contacts
- Standards
- Assessment

How do you organize this information differently to reflect the usage styles of:

- Administrators?
- Parents?
- Teachers?
- Students?

Storyboarding: the idea

- Two different types of “storyboards”
- Site: displays the relationships between pages and potential links
- Page: graphic of a basic page layout at the section level (no content)



Site Storyboarding: Practice

Build an information tree using the categories that you want to add on your site

Include @ least 2 levels

Using the information tree, build a site storyboard that reflects your school's goals

Design Principles

Similar to Layout Principles, but more concerned with color and shape

- Color: contrasting/complementing (example)
- Value: light versus dark: contrast
- Line: where does the eye start and where does it end?
- Texture: colors and lines
- Shape and Form: alignment and transition
- Space: open space used to control emphasis and motion
- Language and Usage Dependencies

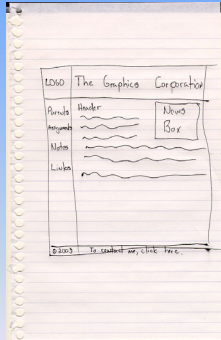
Page Storyboarding

Who cares?

- site visitor
- stakeholders
- maintainers

Elements

- Navigation
- Image Layout
- Details: header, footer, information area
- Highlight boxes



Page Storyboarding: Practice

Build a page storyboard for parents and casual visitors using the site storyboard and information tree as a guide

Build another layout to be used only by your principal.

The Element List

Element Lists are critical

Graphics to create

Electronic resources to gather

Technical obstacles that need to be overcome

Content elements

Updated Storyboard(s)

Schemes and Themes

<http://outreach.missouri.edu/images/schemes/>

<http://www.colorschemer.com/online.html>

<http://www.w-ww.com/pagecolors.html>

Dreamweaver Resources

<http://www.macromedia.com/cfusion/exchange/index.cfm>

Copyright Issues

Images and text that will be used on a web site must be owned based on:

- Source
 - clipart✓
 - PhotoCD✓
 - web download ?
 - icon of another program ?
 - Television (Required)
 - Webcast (Required)
- Amount of usage: amount varies by context and media
- Frequency of usage

Bottom Line

If the text or image will be used to identify your school to the outside world, obtain written permission for its use or create it yourself.

Easy to obtain, but time-consuming.

HTML

H-T-M-L = HyperText Markup Language

- **Hyper** allows the person viewing the World Wide Web page to go anywhere, any time they want.
- **Text** Real, honest to goodness English letters.
- **Mark up** Write in plain English and then mark up what you wrote.
- **Language** the language is plain English.

Basic HTML Points

- HTML is written in text format and saved as .htm or .html
- Commands in HTML are called **TAGS**
- Tags are ALWAYS surrounded by angle brackets
- Tags usually occur in pairs surrounding the material they affect
- End TAGS begin with a /.
- Tags are embedded - first on . . . last off.
- Tags often have optional attributes that allow more specific actions.
- Tags are NOT case-sensitive (Valid: <A>, <a>, <A>)

Sample HTML Page

Minimum Required TAGS:

```
<HTML>
  <HEAD>
    <TITLE>Hello Page</TITLE>
  </HEAD>
  <BODY>
    HELLO!
  </BODY>
</HTML>
```

Build Hello.html

- Open Dreamweaver MX
- Select File | New
- Pick Basic Page from the General Tab
- Click on Create
- Add the text “Hello Page” between <TITLE> & </TITLE>
- Add the text “Hello!” between <BODY> & </BODY>
- Save file as Desktop | hello.html
- Click on the Browser Icon (🌐) in Dreamweaver.

Insert Bar – Text



Using the Text tab, select Hello! with the cursor and perform/preview the following actions.

Refresh the browser after every update.

Change to Heading 1 (h1)

Change the color to Red (leftmost button)

Make the text bold (S)

Emphasize (*em*) the text.

Also, use the properties bar at the bottom of the page to change other options. Make sure that you have Hello! Highlighted.

Lists

- Two types of lists:
 - Both types use the tag to display list elements
 - Bulleted (unordered list)
 - Circle
 - Disc
 - Square
 - Numbered – (ordered list)
 - Arabic
 - Lower Alpha (a,b,c)
 - Upper Alpha (A,B,C)
 - Lower Roman (i,ii,iii)
 - Upper Roman (I,II,III)

List Hello.html

- Create the following lists on hello.html:
- List of 3 animals
- 4 Months in numeric order
- Roman list of 3 planets
- List of 4 people you know something other than the default bullet.

Insert Bar – Common: Links

First Section: Link Tools

Link: a reference to another resource

❖ Chain Link: a link to another file or web site

❖ Letter: a link to an email address

❖ Anchor: a link within the current document

 goes to

 within the same page

Hello.html + Links

1. Click on the Insert Bar | Common
2. Click on the chain icon (link)
3. Type in a text description that will be displayed on the page
4. Type in a URL and click OK
5. Test in browser
6. Click on the envelope icon (mailto)
7. Enter an email address, Click OK, and test in browser
8. Hit Enter 25 times to scroll the page and click on the anchor icon (name)
9. Enter "stuff" as the name and click OK.
10. Hit enter and type some random text, just for visual affect.
11. Scroll back to the top of the page and click on the chain icon (link)
12. Type "Some Stuff" as the text and #stuff as the URL
13. Click OK and test in the browser.

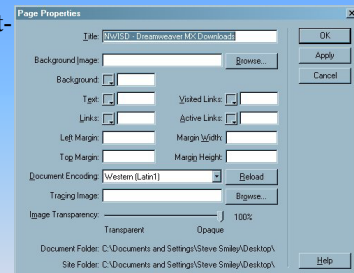
Page Properties Changes

On the hello.html page, right-click and select Page Properties (last option)

Perform/preview the following actions using hello.html.

Refresh the browser after every update.

- Background
- Text
- Margins



We will work with links next.

Hello.html + Page Changes

- Right click on hello.html and select Page Properties (last option)
- Change the background color and all of the link colors
- Test in browser to see effects.
- Find an image on your hard drive.
- Add it as the background image.
- Test in browser.
- Use Ctrl-Z to undo the mess you just made.

Insert Bar – Common: Tables



Second Section: Table/Table Layout Tools

Table: a set of rows and columns (can be embedded within each other)

- ❖ Table: Dialog to create a table where the cursor resides when pushed.
- ❖ Layout Table: a “fake” table used by Dreamweaver to create a page layout

Web design secret

Tables are the ONLY way of insuring page layout across all browsers. Internet Explorer and Netscape Navigator have different (and conflicting) methods of layout tags; they do not mix easily.

Tables

Formats section of web page into columns and rows

Border	adds a border on the perimeter of a table also adds grid lines between the cells of the table
Cell-Spacing	specifies space between cells in a table
Cell-Padding	specifies space from the data in cell to cell edge
Caption	adds cell either above or below table for caption
Heading format	formats contents of cell as bold & centered
Width	specifies the desired width of a table in pixels or % of window pixels = specified width, % adjusts width of viewing window
Table Height	desired height of table in pixels or % of window
Background	formats background of table cell with solid color or image
Cell-spans	choose number of columns or rows wide for cells

Hello.html + a table

- Click on the Insert bar | Tables
- Click on the table icon
 - 3 rows, 2 columns, cellspacing = 2, cellpadding = 2
 - Use the mouse to modify column widths and row height, if desired
- Enter text in each of the cells on the first two rows and test in browser.
- Select the 3rd row.
- Right-click and select Table | Merge Cells
- Enter some text as a footer for the table and center it (right-click and select Align | Right)
- Test in browser

Insert Bar – Common: Graphics



Third Section: Images and Objects

- Image: inserts an image within the web page.
 - SRC: URL of the image to be displayed
 - ALT: displayed when a page is displayed in text mode or when the mouse is left over an image (browser-dependent)
 - HEIGHT: (Optional) Height of the image in pixels
 - WIDTH: (Optional) Width of the image in pixels
 - BORDER: default value is 1; set to 0 if the image is a link
 - ALIGN: All sorts of variations
- Image Placeholder: Rarely used; creates a formatted area to put an image before the image is loaded by the browser
- Fireworks HTML: PNG/HTML code created by Macromedia Fireworks
- Flash: inserts a Flash animation
- Rollover Image: Easy way to create an image that changes when the mouse moves over it.
- Navigation Bar: more on this later

Image Alignment

- | | |
|------------------|--|
| Left | puts image on left and wraps following data on right |
| Right | puts image on right and wraps following data to left |
| Top | puts image on left, aligns next line at top of image |
| Abstop | puts image on left, aligns next line at EXTREME top of image |
| Middle | puts image on left, aligns next line at middle of image |
| Absmiddle | puts image on left, aligns next line at very middle of image |
| Bottom | puts image on left, aligns next line at bottom of image |
| Abbottom | puts image on left, aligns next line at baseline of image |

Image Usage

- GIF and JPG are supported by every browser that displays images
- GIFs can have transparent areas (remember PhotoShop)
- PNG is a relatively new format that is supported by all browsers created within the last 18 months
- Not directly supported:
 - Vector images of ANY type
 - BMP, WMF, MOV*, AVI*, EPS*, PSD, FH10, AI, FLA, LIV

* plug-in required

Hello.html + Graphics

C:\Program Files\Macromedia\Flex MX\Samples\Images

1. Select the Insert Bar | Common
2. Click on the Image icon and drag it to your design area
3. Move to the directory above and select one of the available images
4. Test in browser
5. Right-click on the image and modify the alignment. Type some text by the image and see how it is affected by image alignment.

Images can always be resized using PhotoShop or Freehand and sized to 72dpi for web transport.

Insert Bar – Common: Assorted



Fourth Section: Assorted

- Hard Rule: a line across the page, used to break up vertical text
 - WIDTH: how wide the line should be across the screen
 - ALIGN: where the line should exist (left, right, middle)
 - SIZE: how thick the line should be in pixels
 - NOSHADE: default line has a shadow; this attribute turns it off.
 - COLOR: pick one of the available 256
- DateTime: Inserts a static date and time into the page. This time does NOT update when the page reloads
- Import Tabular Data: Can import a delimited file into the document as a table

Hello.html + Assorted

- Drag each of the following onto hello.html:
 - Hard Rule
 - Modify width, size, and noshade using code tab
 - Date and Time (2 versions)
 - Click on Tabular Data box and examine options

Insert Bar – Comments/Help



Last Section: Comments & Tag Help

- Comments are NOT visible to the user and will help to remind the maintainers of the page WHY things were done the way that they were.
- Reference button takes you to a complete language/tag reference for everything supported by Macromedia

Stop Until Next Time

Assignment

Build a site storyboard, a page storyboard, and an element list

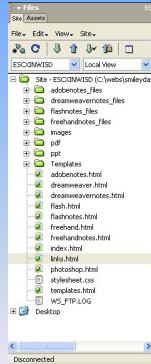
Resources:

<http://www.fno.org/homesweet.html>
<http://www.101-dreamweaver-tutorials.com/>
http://www.csupomona.edu/~faculty_computing/swim/2001/bootcamp/resources.html

Dreamweaver Sites

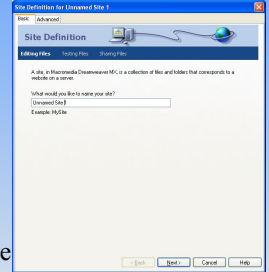
Sites are a way to organize your pages visually

- Allows Dreamweaver to manage links and folders
- Simplifies site maintenance
- Easy-to-create and visualize
- Provide a pure view of how your files relate to each other



Creating a Site

- Dreamweaver assumes that:
- You will posting your pages somewhere else
- You will be building your pages locally (on you machine)
- The sites, both local and remote, are the same structure



Do it!

Walkthrough

Build-A-Page Overview

Table layouts control placement


- Merge and align cells and rows to form the basic page format
- Tables can be placed within tables
- Horizontal Alignment = align
 - Left/Right/Center
- Vertical Alignment = valign
 - Top/Middle/Bottom + variations

Build-A-Page #2

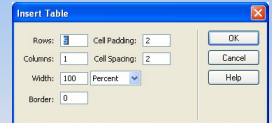
Watch the board

1. Table
2. Merge to form basic outline
3. Insert & Type
4. Add Pretty Colors
5. Details
6. Save

Build-A-Page: Dreamweaver 1

1. Click on the table icon 
2. Enter the number of rows and columns
 - usually 3 and 3
3. Enter a border width
 - Usually 0 for layout tables
4. Click OK.
5. Save File as pre.html

1. **Table**
2. Merge to form basic outline
3. Insert & Type
4. Add Pretty Colors
5. Details
6. Save

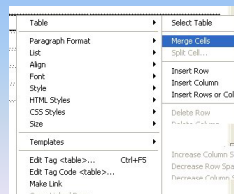


Build-A-Page: Dreamweaver 2

1. Left-click and drag to select cells
2. Right-click and select Table | Merge Cells to consolidate
3. To change colors or properties, look at the properties section on the bottom of the window.

- Describes what is selected
- Displays options for selection
 - Horz/Vert = alignment
 - W/H = width/height

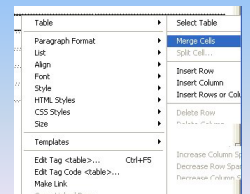
1. Table
2. **Merge to form basic outline**
3. Insert & Type
4. Add Pretty Colors
5. Details
6. Save



Build-A-Page: Dreamweaver 3

1. Type in text placeholders for navigation
2. Type BODY in the middle section of the page
3. Type School Name in the top
4. Type Copyright and contact information in the bottom
5. Save as prefinal.html

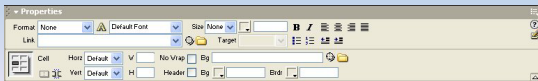
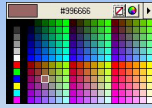
1. Table
2. Merge to form basic outline
3. **Insert & Type**
4. Add Pretty Colors
5. Details
6. Save



Build-A-Page: Dreamweaver 4

1. Select the cells to change
2. In the Properties Panel, click on the color selector labeled Bg
3. Select the color from the color popup box

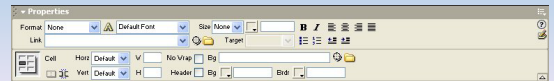
1. Table
2. Merge to form basic outline
3. Insert & Type
4. **Add Pretty Colors**
5. Details
6. Save



Build-A-Page: Dreamweaver 5

1. Add copyright information/contacts on the bottom of the page
2. Add link information to each link placeholder
3. Add a title to the page
4. Verify that everything is where your storyboard says it should be.

1. Table
2. Merge to form basic outline
3. Insert & Type
4. Add Pretty Colors
5. **Details**
6. Save



Build-A-Page: Dreamweaver 6

1. Save the file as prefinal.html
2. Done.

1. Table
2. Merge to form basic outline
3. Insert & Type
4. Add Pretty Colors
5. Details
6. **Save**

Experimentation

Your file is saved as prefinal.html. Some changes remain, but you are relatively happy (be generous)

15 minutes

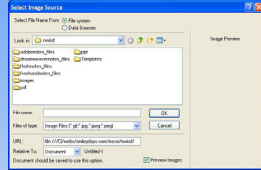
Change everything from cell alignment to image placement using the right-click and properties menu.

Ctrl-z = Undo

Save your changes when you are ready to live with them for the rest of the day.

Next steps: Static Page

- Add a logo in the area you defined.
- Use the properties panel to align the picture within the chosen area.
- Save the file as prefinal.html



Lunch

Template Overview

- Basic layout
- Areas where you want teachers to add things
- Areas that you don't want anyone to change
- Can be updated without affecting site content
- Save thousands of hours of maintenance

- Templates are the answer!

Template Fundamentals

- Master web document controlling placement and layout of elements
- Extension = .dwt
- Directory = /Templates
- By default, all areas of a template are NOT editable
- Normal HTML files
- Used ONLY by Dreamweaver; other editors will not function properly with Dreamweaver Templates

Three Ways to a Template

- Open prefinal.html
- Select File | Save As Template

OR

- Select the Template tab in the Insert Panel
- Click the leftmost button: Make Template

OR

- (New only) Select File | New and select the Template Page | HTML template item; then click Create

Regions and Editing

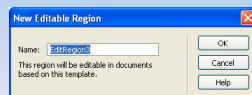
Template control layout and entry by creating specified regions that can be edited and locking all others.

Types of Regions:

- Locked – most of the template cannot be edited when applied to an HTML page
- Editable – can freely edit (most common)
- Repeating – duplicatable region that can contain editable AND non-editable regions
- Repeating table – table with some or all cells editable (2nd most common)
- Optional – can appear or not appear based on other information within an HTML page
- Editable Optional – editable and optional

Adding an Editable Region

- Click in the body area of your document
- Right-click and select Templates | New Editable Region
- Give the Region a name in the New Editable Region Dialog Box.
- Add directions if you feel they are needed.
- Click OK
- Done



Other Possibilities



- The Template tab of the Insert Bar contains each type of region.
- For the menu-minded, this is a useful tab.
- Generally being replaced by right-click menu

Applying Templates to Pages

Two choices:

- Create a new page within your site using the defined template

OR

- Select Modify | Templates | Apply Template to Page
 - Dreamweaver will attempt to match existing areas of content to the template
 - Not always successful

Creating your school site

60 minutes

- Review your storyboard
- Create at least 5 pages of your site using the prefinal Template that we created earlier
- Image CDs and logos are available
- Save the pages into your site

Updating a Template

- Open the .dwt file in the Templates directory of your site
- Make the desired changes
 - Attempt to preserve editable regions; content may disappear if you delete them
- Select File | Save when completed
- Dreamweaver will automatically update all pages within your site that use the template

Finish your school site

Issues will be addressed individually or as we come to them.

Use this time to complete your basic school site.

Class Contacts

District Contact

Melissa Shawn

melissa@northwest.k12.tx.us

Technical Contact

(until 5/30/2003)

Steve Smiley

steve@smileydays.com

<http://www.smileydays.com/escxi/nwid/>