

Macromedia Dreamweaver Templates

Steve Smiley
Education Service Center XI
ssmiley@edtech.esc11.net

District Contact

Melissa Shawn
mshawn@northwest.k12.tx.us



Class Schedule

Overall: 8:30 AM – 3:30 PM

Before Lunch

- Design Basics
- Dreamweaver Basics
- Site Management
- Basic Web Page Creation

After Lunch

- Templates

A couple of breaks thrown in as needed.



Class Goals

- Understand design and analysis basics
- Build a basic web page using Dreamweaver
- Implement a site for use by my school
- Build a basic template that reflects school ideas, goals, and demand

Layout Principles

- Lead users to important information using
 - Contrast
 - Repetition
 - Alignment
 - Proximity
- Integrate similar information
- Control how a user perceives your information – where their eyes go and when

Layout Bad Example

- Example #1 – [Backgrounds](#)
- Example #2 – [Distractions](#)
- Example #3 – [Too Many Widgets](#)
- Example #4 – [Highly technical](#)

Great Web Page Design Page
<http://www.ratz.com/features.html>

Home of Bad Examples and Good Design
<http://www.webpagesthatsuck.com>

Layout Good Example

- [Simple Text Layout](#)
- [Good graphics integration](#)
 - Ignore the first page, which was recently destroyed
- [Clean graphics](#)
- [Simple Organization – Full Screen](#)

Pick your favorite web page
Write down
three things that they do well
at least two improvements

Information Designs & Trees

An Information Tree is a hierarchal organization of information

- Phylum
- School District organization charts
- Sentence Structure
- School “blocks”

Simple to navigate and easy-to-use

School Information

- Policies
- Requirements and Grading
- Location
- Principal
- Syllabus
- Assignments
- Success Stories
- News
- Web Links
- Faculty
- Special Programs
- Calendars
- Basic School Information
- Contacts
- Standards
- Assessment

How do you organize this information differently to reflect the usage styles of:

- Administrators?
- Parents?
- Teachers?
- Students?

Design Principles

Similar to Layout Principles, but more concerned with color and shape

- Color: contrasting/complementing (example)
- Value: light versus dark: contrast
- Line: where does the eye start and where does it end?
- Texture: colors and lines
- Shape and Form: alignment and transition
- Space: open space used to control emphasis and motion
- Language and Usage Dependencies

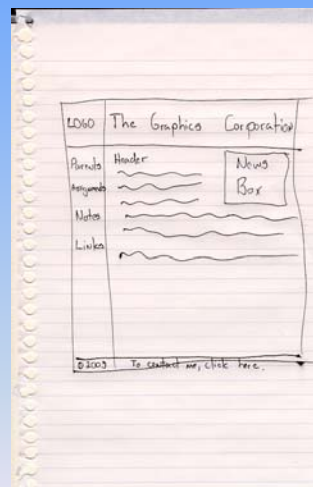
Page Storyboarding

Who cares?

- site visitor
- stakeholders
- maintainers

Elements

- Navigation
- Image Layout
- Details: header, footer, information area
- Highlight boxes



Page Storyboarding: Practice

Build a site layout for parents and casual visitors using the site storyboard and information tree as a guide

Build another layout to be used only by your principal.

The Element List

Element Lists are critical

Graphics to create

Electronic resources to gather

Technical obstacles that need to be overcome

Content elements

Updated Storyboard(s)

Schemes and Themes

<http://outreach.missouri.edu/images/schemes/>

<http://www.colorschemer.com/online.html>

<http://www.w-ww.com/pagecolors.html>

Dreamweaver Resources

<http://www.macromedia.com/cfusion/exchange/index.cfm>

Copyright Issues

Images and text that will be used on a web site must be owned based on:

- Source
 - clipart✓
 - PhotoCD✓
 - web download ?
 - icon of another program ?
 - Television (Required)
 - Webcast (Required)
- Amount of usage: amount varies by context and media
- Frequency of usage

Bottom Line

If the text or image will be used to identify your school to the outside world, obtain written permission for its use or create it yourself.

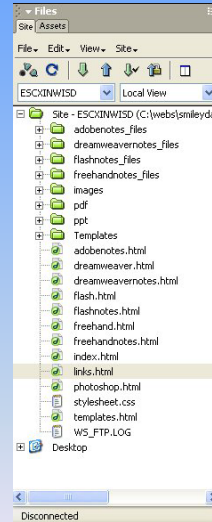
Easy to obtain, but time-consuming.

30 minute
Reading/Biology

Dreamweaver Sites

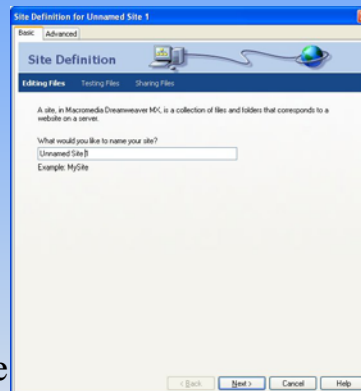
Sites are a way to organize your pages visually

- Allows Dreamweaver to manage links and folders
- Simplifies site maintenance
- Easy-to-create and visualize
- Provide a pure view of how your files relate to each other



Creating a Site

- Dreamweaver assumes that:
- You will posting your pages somewhere else
- You will be building your pages locally (on you machine)
- The sites, both local and remote, are the same structure



Do it!

Walkthrough

HTML Basics

Basic HTML Points

- ❖ HTML is written in text format and saved as .htm or .html
- ❖ Commands in HTML are called **TAGS**
- ❖ Tags are **ALWAYS** surrounded by angle brackets
- ❖ Tags usually occur in pairs surrounding the material they affect
- ❖ End TAGS begin with a /.
- ❖ Tags are embedded - first on . . . last off.
- ❖ Tags often have optional attributes that allow more specific actions.
- ❖ Tags are **NOT** case-sensitive (Valid: <A>, <a>, <A>)

Build-A-Page Overview

Table layouts control placement

- Merge and align cells and rows to form the basic page format
- Tables can be placed within tables
- Horizontal Alignment = align
 - Left/Right/Center
- Vertical Alignment = valign
 - Top/Middle/Bottom + variations

Build-A-Page #2

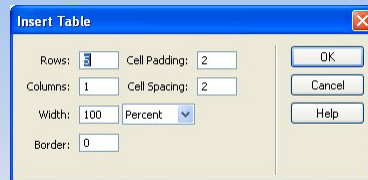
Watch the board

1. Table
2. Merge to form basic outline
3. Insert & Type
4. Add Pretty Colors
5. Details
6. Save

Build-A-Page: Dreamweaver 1

1. Click on the table icon (📄)
2. Enter the number of rows and columns
 - usually 3 and 3
3. Enter a border width
 - Usually 0 for layout tables
4. Click OK.
5. Save File as pre.html

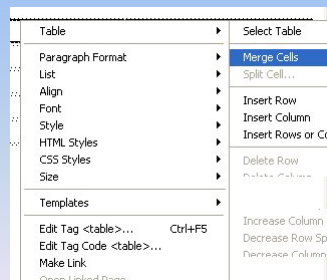
1. **Table**
2. Merge to form basic outline
3. Insert & Type
4. Add Pretty Colors
5. Details
6. Save



Build-A-Page: Dreamweaver 2

1. Left-click and drag to select cells
2. Right-click and select Table | Merge Cells to consolidate
3. To change colors or properties, look at the properties section on the bottom of the window.
 - Describes what is selected
 - Displays options for selection
 - Horz/Vert = alignment
 - W/H = width/height

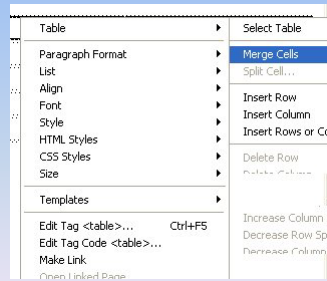
1. Table
2. **Merge to form basic outline**
3. Insert & Type
4. Add Pretty Colors
5. Details
6. Save



Build-A-Page: Dreamweaver 3

1. Type in text placeholders for navigation
2. Type BODY in the middle section of the page
3. Type School Name in the top
4. Type Copyright and contact information in the bottom
5. Save as prefinal.html

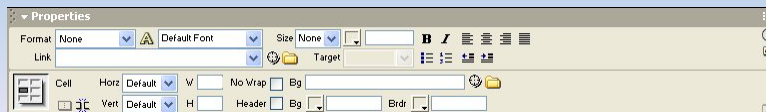
1. Table
2. Merge to form basic outline
- 3. Insert & Type**
4. Add Pretty Colors
5. Details
6. Save



Build-A-Page: Dreamweaver 4

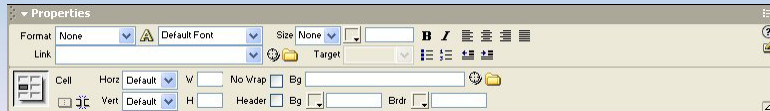
1. Select the cells to change
2. In the Properties Panel, click on the color selector labeled Bg
3. Select the color from the color popup box

1. Table
2. Merge to form basic outline
3. Insert & Type
- 4. Add Pretty Colors**
5. Details
6. Save



Build-A-Page: Dreamweaver 5

1. Add copyright information/contacts on the bottom of the page
 2. Add link information to each link placeholder
 3. Add a title to the page
 4. Verify that everything is where your storyboard says it should be.
1. Table
 2. Merge to form basic outline
 3. Insert & Type
 4. Add Pretty Colors
 5. **Details**
 6. Save

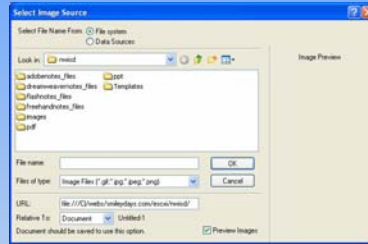


Build-A-Page: Dreamweaver 6

1. Save the file as prefinal.html
 2. Done.
1. Table
 2. Merge to form basic outline
 3. Insert & Type
 4. Add Pretty Colors
 5. Details
 6. **Save**

Next steps: Static Page

- Add a logo in the area you defined.
- Use the properties panel to align the picture within the chosen area.
- Save the file as prefinal.html



Experimentation

Your file is saved as prefinal.html. Some changes remain, but you are relatively happy (be generous)

15 – 30 minutes

Change everything from cell alignment to image placement using the right-click and properties menu.

Ctrl-z = Undo

Save your changes when you are ready to live with them for the rest of the day.

Lunch

Template Overview

- Basic layout
- Areas where you want teachers to add things
- Areas that you don't want anyone to change
- Can be updated without affecting site content
- Save thousands of hours of maintenance

- Templates are the answer!

Template Fundamentals

- Master web document controlling placement and layout of elements
- Extension = .dwt
- Directory = /Templates
- By default, all areas of a template are NOT editable
- Normal HTML files
- Used ONLY by Dreamweaver; other editors will not function properly with Dreamweaver Templates

Three Ways to a Template

- Open prefinal.html
 - Select File | Save As Template
- OR
- Select the Template tab in the Insert Panel
 - Click the leftmost button: Make Template
- OR
- (New only) Select File | New and select the Template Page | HTML template item; then click Create

Regions and Editing

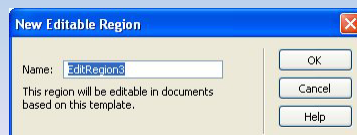
Template control layout and entry by creating specified regions that can be edited and locking all others.

Types of Regions:

- Locked – most of the template cannot be edited when applied to an HTML page
- Editable – can freely edit (most common)
- Repeating – duplicatable region that can contain editable AND non-editable regions
- Repeating table – table with some or all cells editable (2nd most common)
- Optional – can appear or not appear based on other information within an HTML page
- Editable Optional – editable and optional

Adding an Editable Region

- Click in the body area of your document
- Right-click and select Templates | New Editable Region
- Give the Region a name in the New Editable Region Dialog Box.
- Add directions if you feel they are needed.
- Click OK
- Done



Other Possibilities



- The Template tab of the Insert Bar contains each type of region.
- For the menu-minded, this is a useful tab.
- Generally being replaced by right-click menu

Applying Templates to Pages

Two choices:

- Create a new page within your site using the defined template
- OR
- Select Modify | Templates | Apply Template to Page
 - Dreamweaver will attempt to match existing areas of content to the template
 - Not always successful

Creating your school site

60 minutes

- Review your storyboard
- Create at least 5 pages of your site using the prefinal Template that we created earlier
- Image CDs and logos are available
- Save the pages into your site

Updating a Template

- Open the .dwt file in the Templates directory of your site
- Make the desired changes
 - Attempt to preserve editable regions; content may disappear if you delete them
- Select File | Save when completed
- Dreamweaver will automatically update all pages within your site that use the template

Finish your school site

Issues will be addressed individually or as we come to them.

Use this time to complete your basic school site.

Class Contacts

District Contact

Melissa Shawn

mshawn@northwest.k12.tx.us

Technical Contact

(until 5/30/2003)

Steve Smiley

steve@smileydays.com

ssmiley@edtech.esc11.net

<http://www.smileydays.com/escxi/nwisd/>